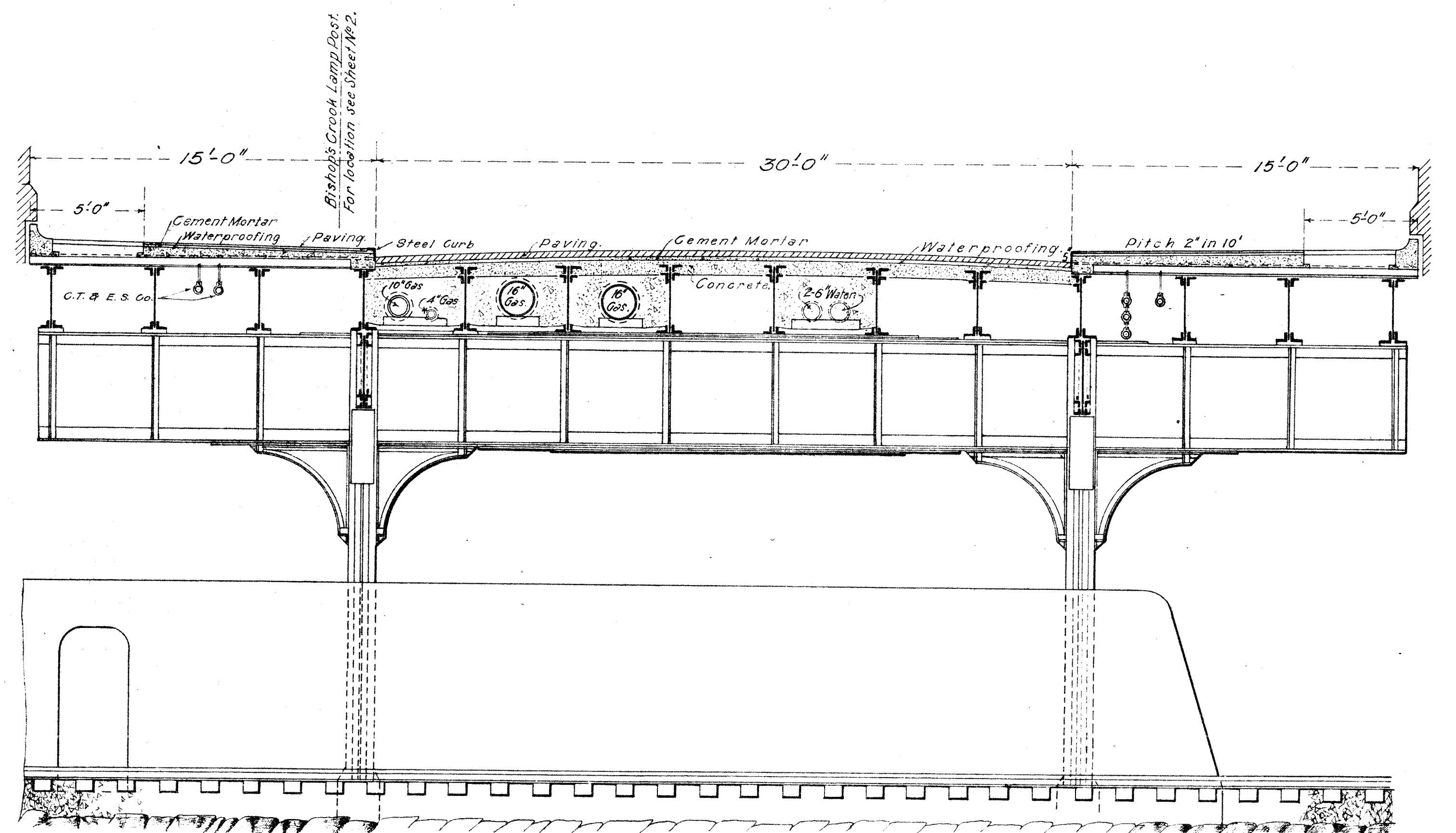
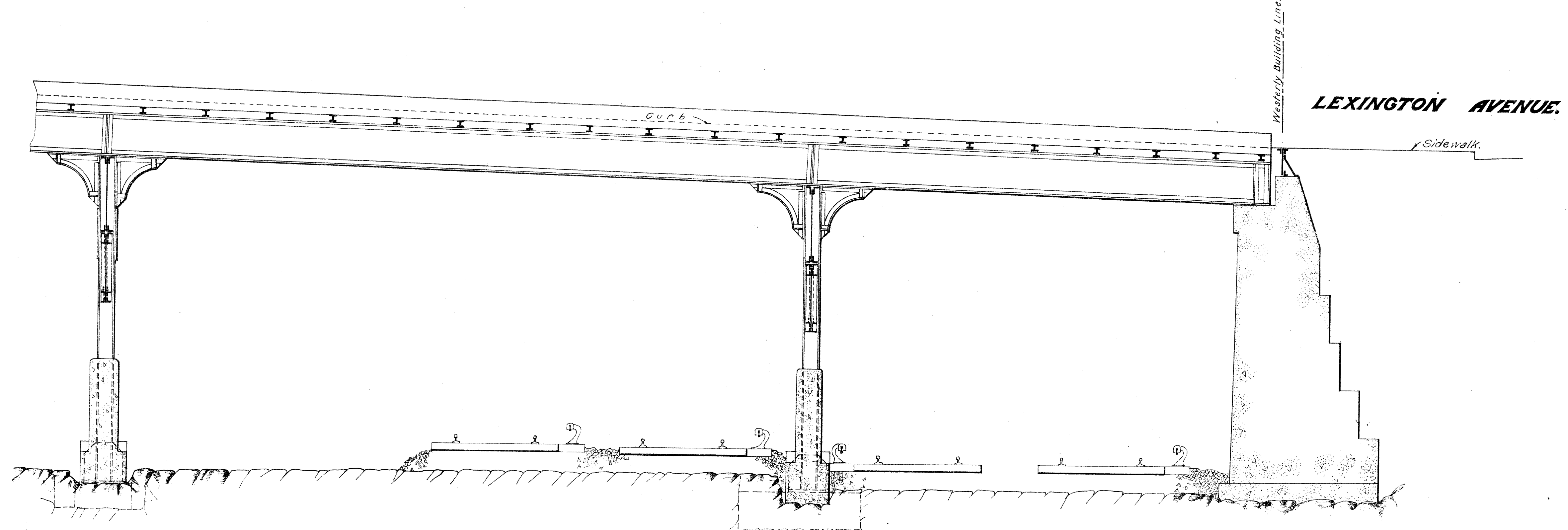


CROSS-SECTION OF 48TH STREET.
EAST OF PARK AVENUE.
Scale 1/4"=1 ft.



CROSS-SECTION OF 49TH STREET.
EAST OF PARK AVENUE.
Scale 1/4"=1 ft.



SIDE-ELEVATION.
Scale 1/4"=1 ft.

N.Y.C.R.R.CO.
Leased and Operated Lines
GRAND CENTRAL TERMINAL IMPROVEMENTS
NEW YORK CITY.

Gross-sections and Elevation
Showing further modifications of the cross-sections and elevation of the
viaducts or bridges required to carry
FORTY-EIGHTH AND FORTY-NINTH STREETS
over the tracks of the New York and Harlem Railroad Company, and mod-
ifying the cross-sections and elevation of such viaducts and bridges which
were prepared by The New York Central and Hudson River Railroad
Company and submitted in duplicate to the Board of Estimate and Ap-
portionment of the City of New York for its approval on the 26th day of
January, 1911, and approved by the said Board of Estimate and Apportionment
on the 15th day of June, 1911, pursuant to Chapter 425 of the Laws of 1903,
as amended by Chapter 639 of the Laws of 1904, and by Chapter 555 of the
Laws of 1910, and also showing alterations, changes and additions other
than the alterations, changes and additions authorized by sections 1, 2
and 3 of said Chapter 425 of the Laws of 1903.

PREPARED BY THE NEW YORK CENTRAL RAILROAD COMPANY
and submitted in duplicate to the
BOARD OF ESTIMATE AND APPORTIONMENT OF THE CITY OF NEW YORK
for its approval on the 10th day of April, 1924,
pursuant to Chapter 425 of the Laws of 1903, as
amended by Chapter 766 of the Laws of 1923,
THE NEW YORK CENTRAL RAILROAD COMPANY,
By *John F. Hylan* President.

STATE OF NEW YORK,
COUNTY OF NEW YORK.
We, the undersigned, JOHN F. HYLAN, Mayor of the City of New
York, and CHARLES L. CRAIG, Comptroller of the City of New York, hereby
certify that the resolution of which the following is a copy was duly
adopted by a majority of the votes of the Board of Estimate and Apport-
ionment of the City of New York, at a meeting duly held on the 11th day
of April, 1924:
RESOLVED, that the cross-sections and elevation showing further
modifications of the cross-sections and elevation of the viaducts or bridges required
to carry Forty-eighth and Forty-ninth streets over the tracks of the New York and
Harlem Railroad Company, and modifying the cross-sections and elevation of such
viaducts and bridges which were prepared by The New York Central and Hudson
River Railroad Company, and submitted in duplicate to the Board of Estimate
and Apportionment of the City of New York for its approval on the 26th day of
January, 1911, and approved by the said Board of Estimate and Apportionment
on the 15th day of June, 1911, pursuant to Chapter 425 of the Laws of 1903,
as amended by Chapter 639 of the Laws of 1904, and by Chapter 555 of the
Laws of 1910, and also showing alterations, changes and additions other than
the alterations, changes and additions authorized by sections 1, 2 and 3 of
said Chapter 425 of the Laws of 1903, prepared by The New York Central
Railroad Company and submitted in duplicate to the Board of Estimate and
Apportionment of the City of New York for its approval on the 10th day of
April, 1924, pursuant to Chapter 425 of the Laws of 1903, as amended
by Chapter 766 of the Laws of 1923, be, and the same are hereby, approved.

Dated, Dec. 28, 1924.
John F. Hylan Mayor of the City of New York.
Charles L. Craig Comptroller of the City of New York.

N.Y.C.R.R.CO.
Approved: *William H. Bennett* Designing Engineer
Approved: *Harmon V. H. & Co.* G.C.S. Architects.
Approved: *W. H. Bennett* Terminal Engineer

APPROVED
Charles L. Craig
CONSULTING ENGINEER
BOROUGH OF MANHATTAN.
John F. Hylan
CHIEF ENGINEER, BOARD OF
ESTIMATE AND APPORTIONMENT.
Approved: *Charles L. Craig* Chief Engineer
John F. Hylan Vice President